

Hemispheric Mirror

- Indoor -

Eighth sphere Mirror 90°



- **Designed for angle, wall or ceiling chain fixing (chain not supplied)**
- **Ideal for traffic control, shop security, warehouse, industrial site, machinery**
- **2 directional viewing**
- **Supplied with screw holes for fixing**

Technical Description

- *Frame material: polypropylene*
- *Mirror material: polycarbonate*

Mottez Article Code

Ø 60 cm

Viewing distance :

Up to 6 m

Weight : 0,99 kg

Article Code : M011C60

EAN Code : 3234640055152

Ø 80 cm

Viewing distance :

Up to 8 m

Weight : 1,06 kg

Article Code : M011C80

EAN Code : 3234640055169

Ø 100 cm

Viewing distance :

Up to 10 m

Weight : 1,86 kg

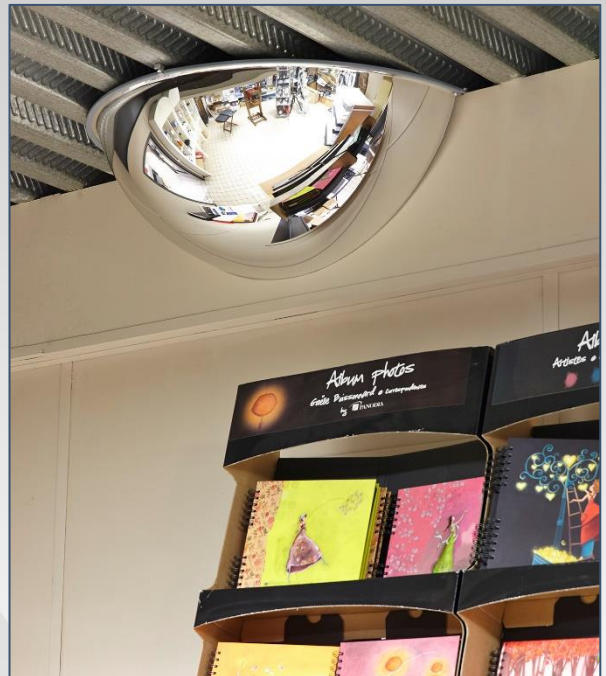
Article Code : M011C100

EAN Code : 3234640055176

Hemispheric Mirror

- Indoor -

Quarter sphere Mirror 180°



- Designed for angle, wall or ceiling chain fixing (chain not supplied)
- Ideal for traffic control, shop security, warehouse, industrial site, machinery
- 3 directional viewing
- Supplied with screw holes for fixing

Technical Description

- Frame material: polypropylene
- Mirror material: polycarbonate

Mottez Article Code

Ø 60 cm

Viewing distance :
Up to 8 m
Weight : 0,45 kg

Article Code : M012C60
EAN Code : 3234640055121

Ø 80 cm

Viewing distance :
Up to 12 m
Weight : 0,78 kg

Article Code : M012C80
EAN Code : 3234640055138

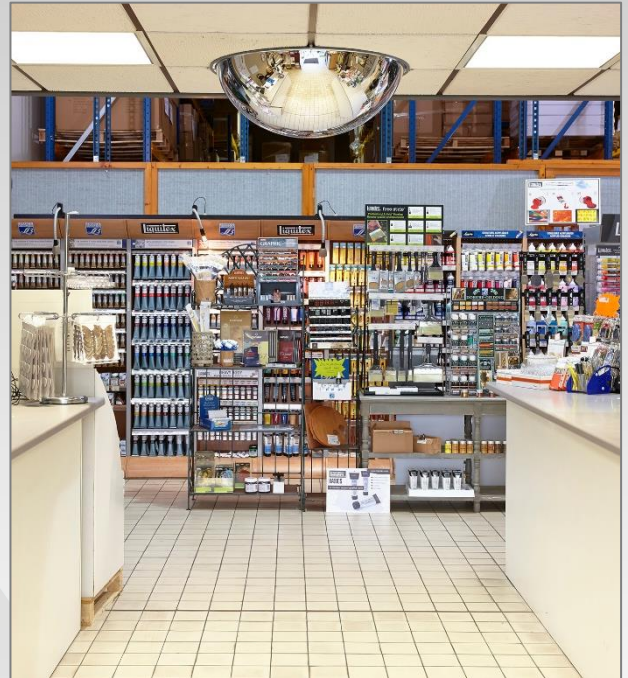
Ø 100 cm

Viewing distance :
Up to 16 m
Weight : 1,03 kg

Article Code : M012C100
EAN Code : 3234640055145

Hemispheric Mirror - Indoor -

Dome Mirror 360°



- Wall or ceiling mounting with fixing bracket (screws not supplied) or by chain (not supplied)...
- Ideal for traffic control, shop security, warehouse, industrial site, machinery
- 4 directional viewing
- Supplied with screw holes for fixing

Technical Description

- Frame material: polypropylene
- Mirror material: polycarbonate

Mottez Article Code

Ø 60 cm

Viewing distance :
Up to 8 m
Weight : 0,90 kg

Article Code : M013C60
EAN Code : 3234640055091

Ø 80 cm

Viewing distance :
Up to 12 m
Weight : 1,41 kg

Article Code : M013C80
EAN Code : 3234640055107

Ø 100 cm

Viewing distance :
Up to 16 m
Weight : 2,07 kg

Article Code : M013C100
EAN Code : 3234640055114