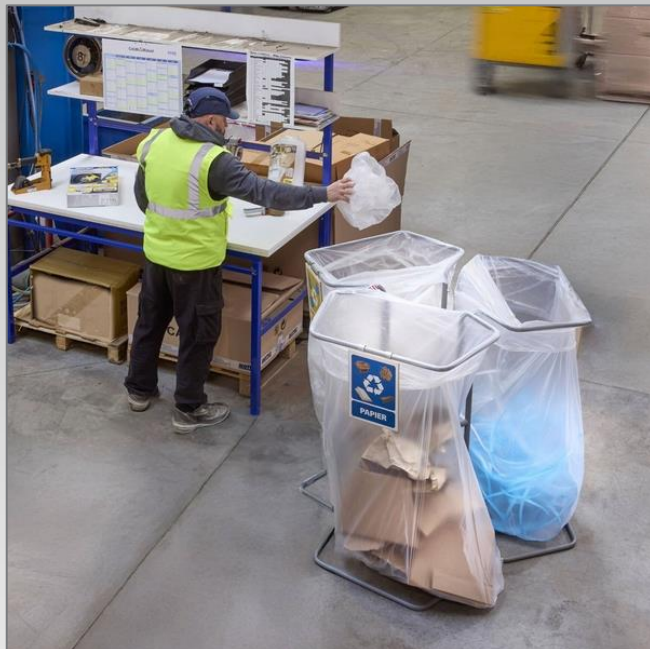
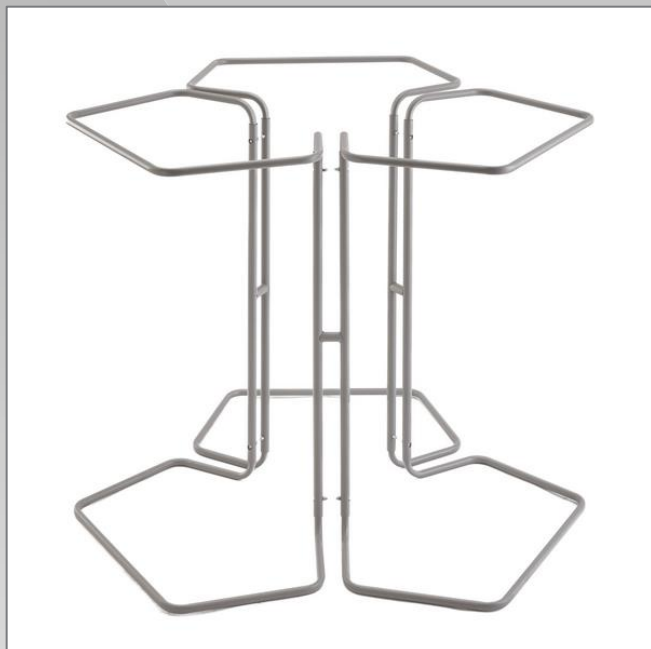


Triple Bin Support Frame



- This stand is the ideal solution for centralizing and optimizing waste management, whether in a professional or community setting.
- Designed to adapt to your needs, it combines functionality, sturdiness, and versatility.
- Compatible with our 240L bags (ref. W074) and 400L bags (ref. W073): the top rim of each compartment is perfectly adjusted to keep the bags in place, ensuring clean and practical use.
- Stable and robust structure: engineered to ensure stability, even with intensive use, and to prevent any accidental tipping.
- Practical centralization: The 3 compartments are grouped together, so you don't need separate bins in different areas — making things more organized.
- Customization option: add neutral panels (ref. B901SNE) or panels dedicated to selective sorting (ref. B901S3) to meet your specific needs and raise awareness about waste sorting.

Technical Description

- **Material:** Steel tubing — Ø 25 mm, 1.5 mm thick (vertical uprights) and Ø 20 mm, 1.5 mm thick (top openings and lower frame), frost gray painted finish (RAL 7037)
- **Dimensions:** Overall Ø 136 cm x height 109 cm
- **Weight:** 12.6 kg

Mottez Article Code

Article Code : **M009C**
EAN Code : 3234640063737

% of recycled material in the product	70 %
% recycled product in packaging	100 %
Hazardous substance > 0.1%	No
Repairability Index	10 / 10
Recyclable product	Yes

