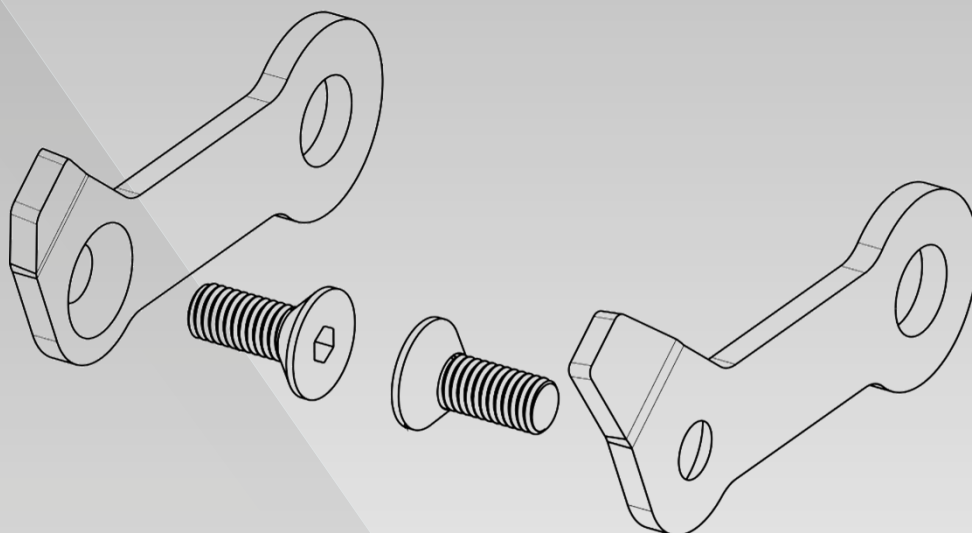


Fix4Bike Compatibility Kit



- The ideal solution to upgrade your existing bike rack and make it compatible with the new Fix4Bike tow ball system.
- Designed for models A028P2, A021P2RA, A021P3RA, A009P3RA, A009P4RA, and A033P3ELEC, this kit allows you to keep your current equipment while enjoying the benefits of the Fix4Bike system, without having to invest in a new bike rack.
- With this device, mounting on the tow ball becomes simpler, faster, and safer, thanks to the Fix4Bike system's specific notches that ensure automatic positioning and enhanced stability.
- The kit can be installed directly by the customer if they already own the product, or by MOTTEZ upon request when ordering a new bike rack.
- This adaptation offers an economical, durable, and practical solution, extending the life of your equipment while bringing it up to the latest technical standards. It ensures perfect compatibility and optimal safety when transporting your bikes.
- Note: Models A009P1, A099P2ANTI, A009P3NM, A031P1ELEC, and A032P2ELEC are already natively compatible with the Fix4Bike system.

Technical Description

- *Material:* galvanized steel
- *Dimensions:* 120 mm length × 50 mm width × 5 mm thickness
- *Weight:* 0.250 kg

Mottez Article Code

Art. Code. : WA001S

EAN : 3234640005287

% of recycled material in the product	70%
% recycled product in packaging	30 %
Hazardous substance > 0.1%	No
Repairability Index	10 / 10
Recyclable product	Yes